

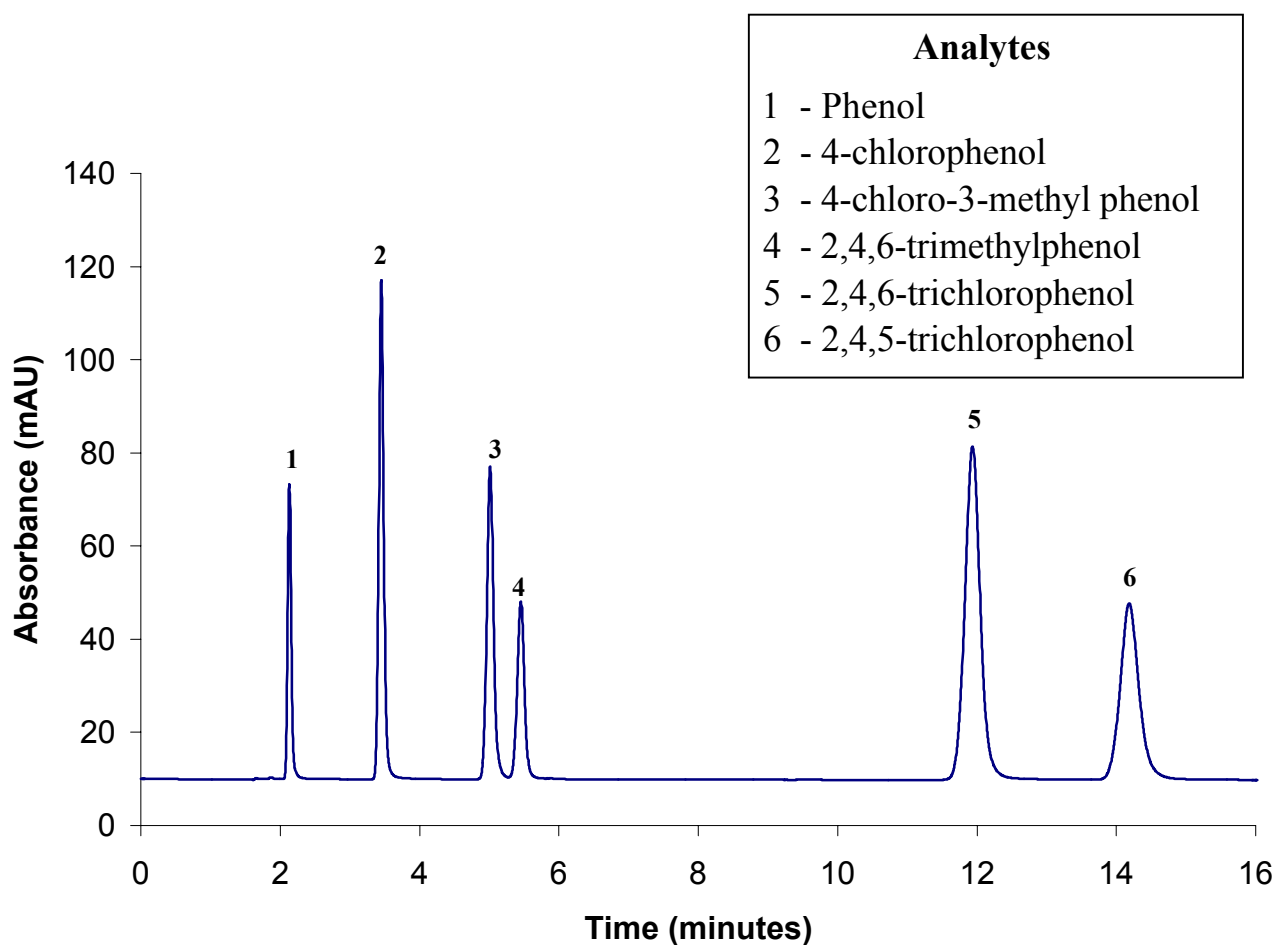


ZirChrom®

Technical Bulletin #131

... For Peak Performance

Chlorophenols Separation on ZirChrom®-PBD



LC Conditions

Column: ZirChrom®-PBD, 150 mm × 4.6 mm i.d.

Mobile Phase: 25/75 A/B

A: Acetonitrile

B: 20mM ammonium acetate and 20 mM sodium fluoride, pH 4.10

Flow rate: 1.0 mL/min.

Temperature: 30 °C

Detection: 280 nm

Pressure Drop: 141 bar

