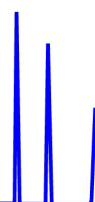




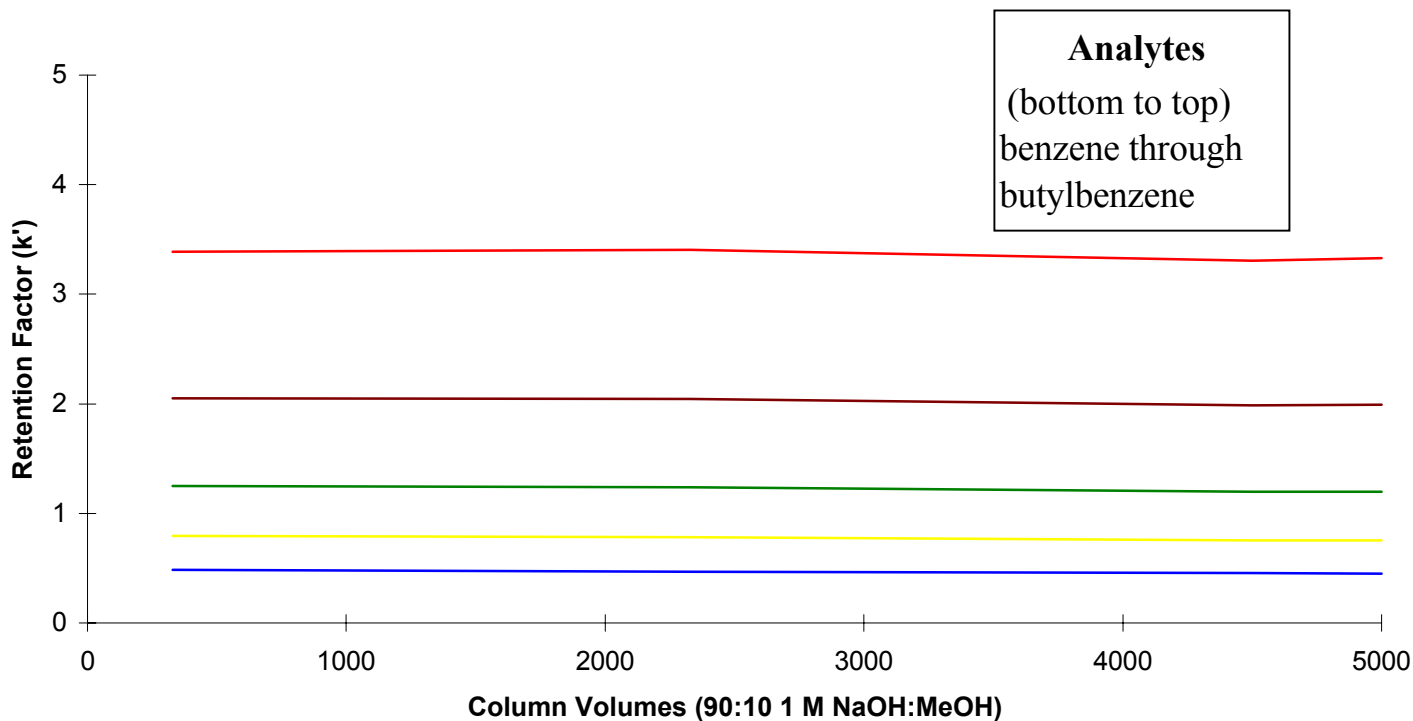
ZirChrom®

Technical  
Bulletin #132



... For Peak Performance

## ZirChrom®-PBD Stability After Base Wash



**Analytes**  
(bottom to top)  
benzene through  
butylbenzene

### LC Conditions

Column: ZirChrom®-PBD, 150 × 4.6 mm

Mobile Phase: 50/50 A/B      Wash Fluid: 90/10 C/D

A: Acetonitrile                      B: Water

C: 1M sodium hydroxide in water      D: Methanol

Flow rate: 1.0 mL/min.

Temperature: 35 °C

Detection: 280 nm

