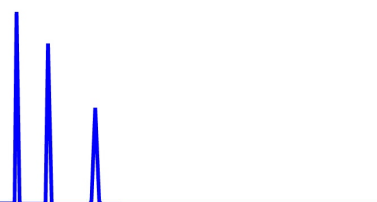




ZirChrom®

Technical
Bulletin #138

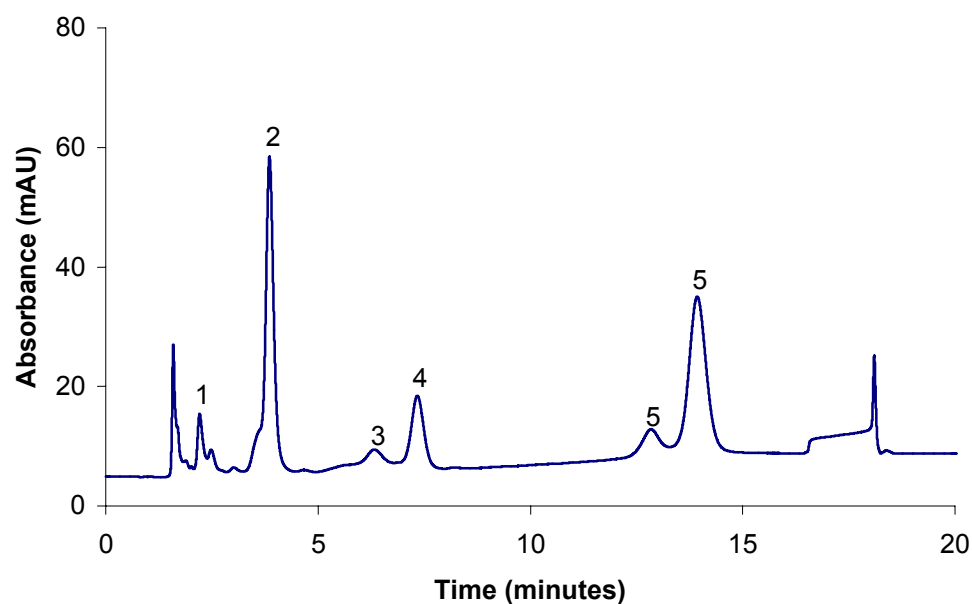


... For Peak Performance

Protein Separation on ZirChrom®-WCX

Analytes

- 1 - Myoglobin
- 2 - Lysozyme
- 3 - α -chymotrypsin
- 4 - Ribonuclease A
- 5 - Cytochrome c oxidized and reduced



LC Conditions

Column: ZirChrom®-WCX, 50 mm x 4.6 mm i.d.

Mobile Phase: A: 50 mM ammonium phosphate
B: 500 mM ammonium phosphate

Flow rate: 1.0 mL/min.
Temperature: Ambient
Detection: 280 nm

Time	%A	%B
0	100	0
10	0	100
20	0	100

