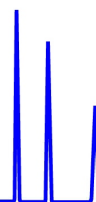




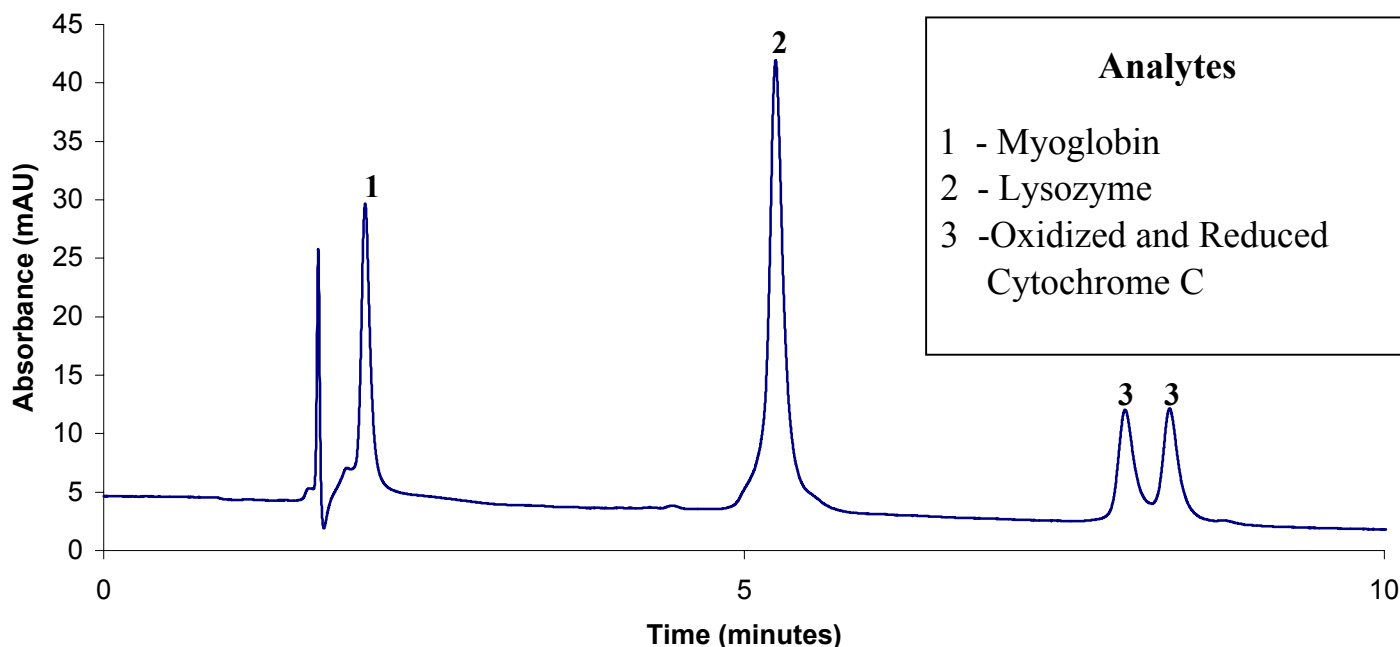
ZirChrom®

Technical
Bulletin #139



... For Peak Performance

Protein Separation on ZirChrom®-PEZ



LC Conditions

Column: ZirChrom®-PEZ, 150 mm x 4.6 mm i.d.

Mobile Phase: Gradient Elution

A: 2 mM N,N,N',N' ethylenediaminetetra(methylenephosphonic acid)
[EDTPA] 20 mM MES, 50 mM sodium chloride, pH 5.5

B: 2 mM EDTPA, 20 mM MES, 1.0 M sodium chloride pH 5.5

Time	%A	%B
0	75	25
10	0	100

Flow rate: 1.0 mL/min.

Temperature: Ambient

Detection: 280 nm

Injection volume: 5 µl

