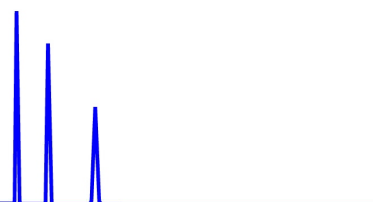




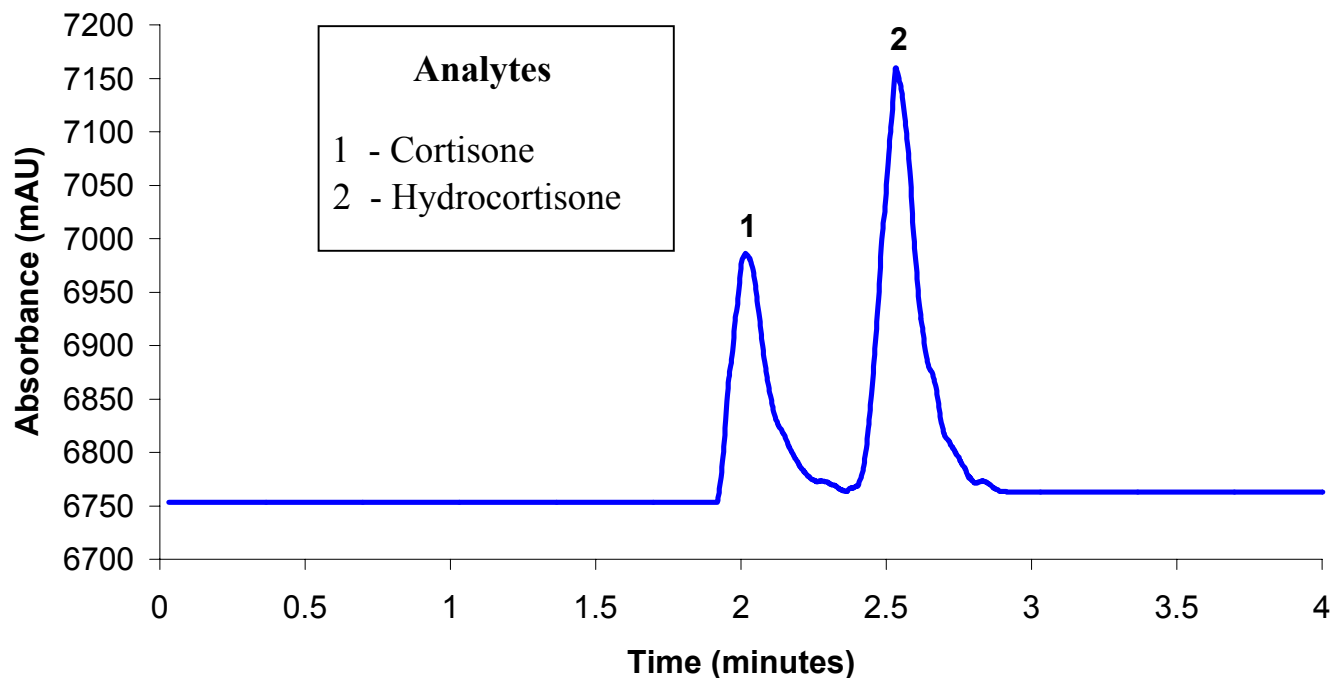
ZirChrom®

Technical  
Bulletin #142



... For Peak Performance

## Steroids Separation on ZirChrom®-PHASE



### LC Conditions

Column: ZirChrom®-PHASE, 150 mm x 4.6 mm i.d.

Mobile Phase: 67/33 A/B

A: Hexane

B: Acetone

Flow rate: 1.0 mL/min.

Temperature: Ambient

Detection: ELSD Detection

