

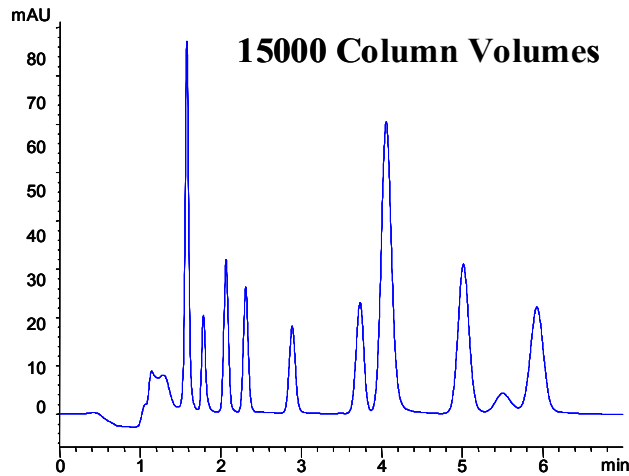
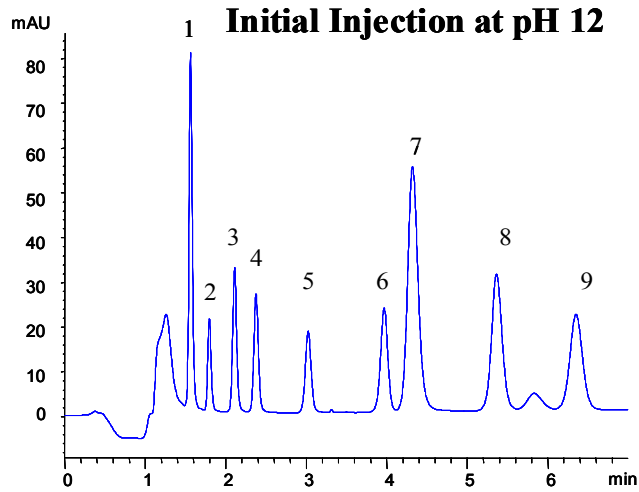


**ZirChrom Separations, Inc.**  
 Toll Free: (866) STABLE-1  
 Fax: (763) 421-2319  
 http://www.zirchrom.com



## Column Life Comparison for $\beta$ Blockers

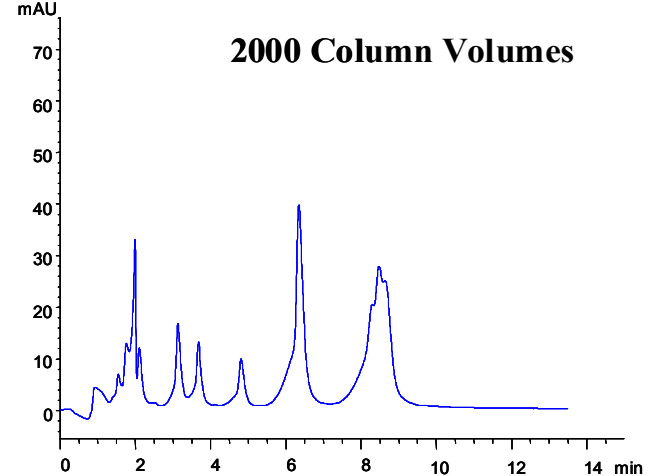
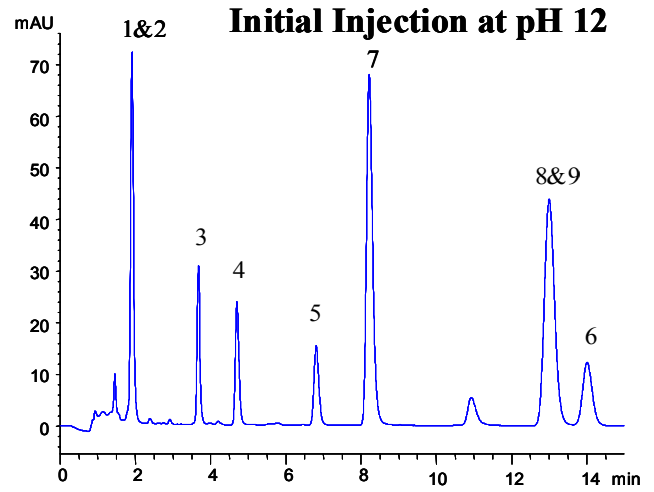
### ZirChrom®-PBD



**LC Conditions:**

ZirChrom®-PBD; Mobile Phase, 28/72 acetonitrile/  
 20 mM potassium phosphate at pH=12.0; Flow Rate,  
 1.0 mL/min.; Temperature, 30°C; Detection, 254 nm.  
 Solutes: 1=Labetalol, 2=Atenolol, 3=Acebutolol,  
 4=Metoprolol, 5=Oxprenolol, 6=Lidocaine,  
 7=Quinidine, 8=Alprenolol, 9=Propranolol.

### Waters Xterra™ RP<sub>18</sub>



**LC Conditions:**

Waters Xterra™ RP<sub>18</sub>; Mobile Phase, 35/65 acetonitrile/  
 20 mM potassium phosphate at pH=12.0; Flow Rate,  
 1.0 mL/min.; Temperature, 30°C; Detection, 254 nm.  
 Solutes: 1=Labetalol, 2=Atenolol, 3=Acebutolol,  
 4=Metoprolol, 5=Oxprenolol, 6=Lidocaine,  
 7=Quinidine, 8=Alprenolol, 9=Propranolol.

### Column Life Comparison at pH 12

