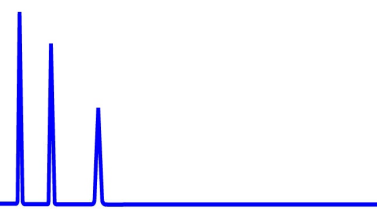




ZirChrom®

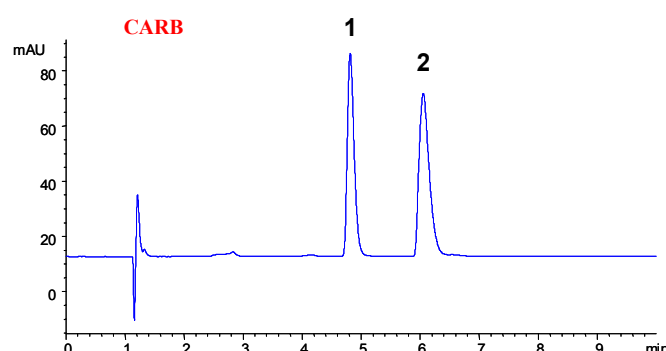
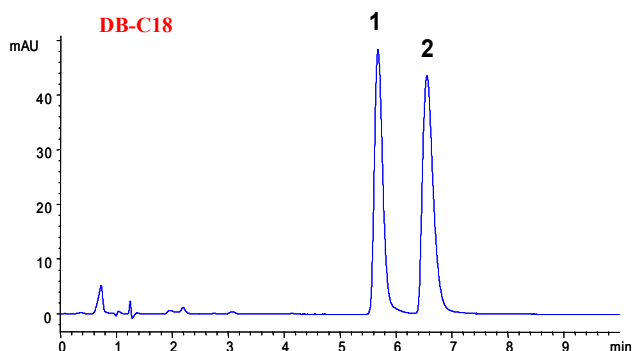
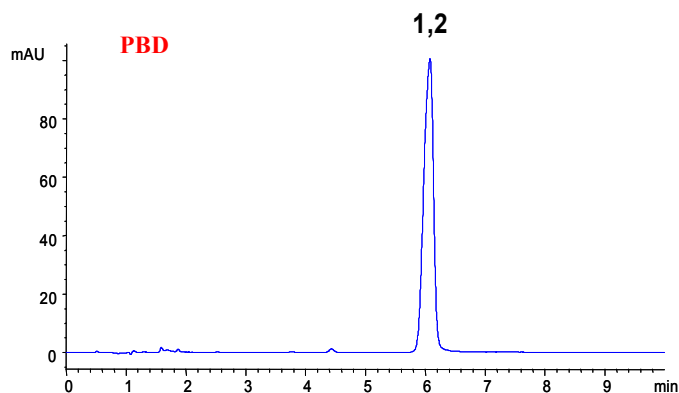
Technical  
Bulletin #232



... For Peak Performance

## Selectivity Comparison: PBD, DB-C18 & CARB

**Analytes**  
1 - Ethylbenzene  
2 - p-Xylene



### LC Conditions

Column: PBD, **DIAMOND BOND™**18, CARB, 100 × 4.6 mm

Mobile Phase: (PBD) 35/65, (DB-C18) 37.5/57.5/5,  
(CARB) 32.5/67.5 A/B/C

A: ACN  
B: Water  
C: THF

Flow rate: 1.0 mL/min.  
Temperature: 30 °C (PBD)  
60 °C (DB-C18)  
60 °C (CARB)  
Injection: 5 µL  
Detection: 254 nm

