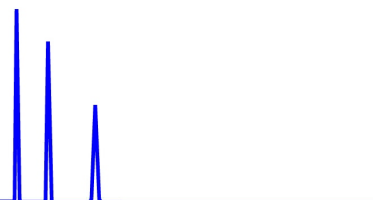




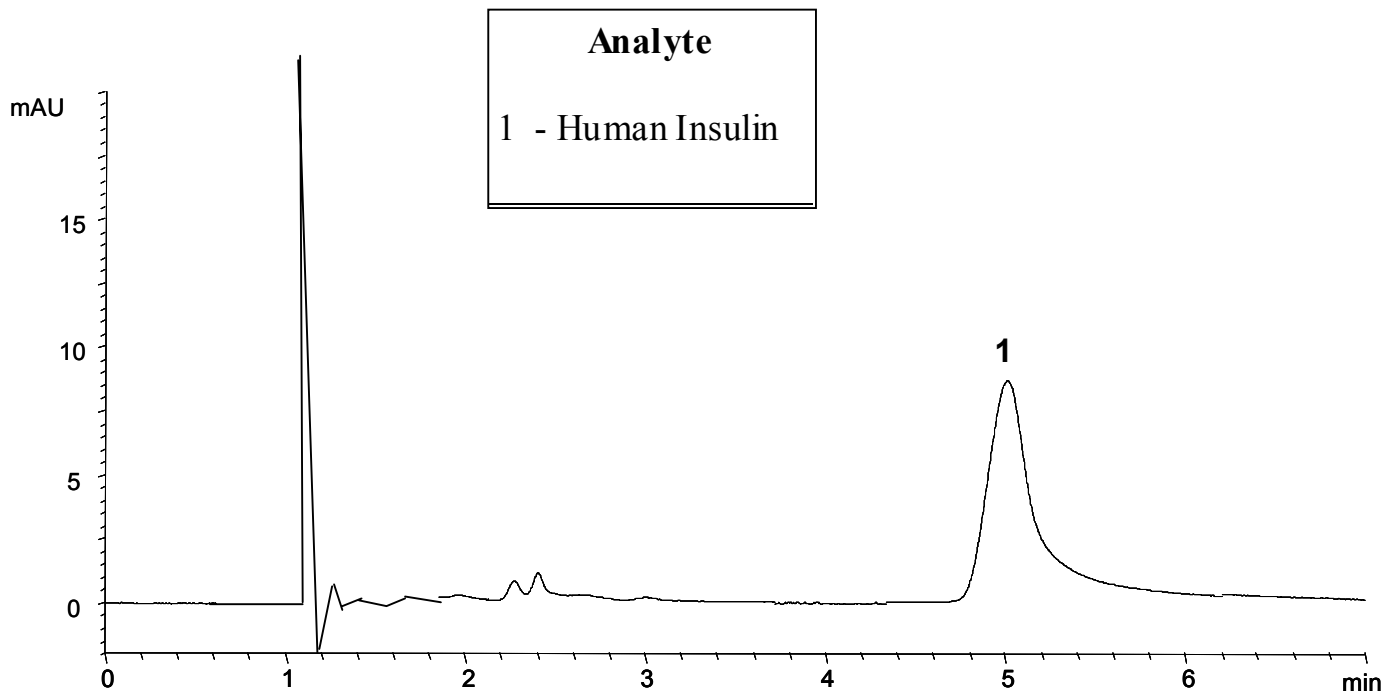
ZirChrom®

Technical  
Bulletin #252



... For Peak Performance

## Separation of Human Insulin on ZirChrom®-SHAX



### LC Conditions

Column: ZirChrom®-SHAX, 150 x 4.6 mm i.d.

Mobile Phase: 15/85 A/B

A: 0.5M ammonium hydroxide pH 11.6

B: 20mM ammonium acetate pH 10.0

Flow rate:

1.0 mL/min.

Temperature:

30 °C

Injection volume:

5 µL

Detection:

254 nm

