



ZirChrom®

LC/MS Compatible Separation of Antidepressants on ZirChrom®-MS

Clayton McNeff, Ph.D., Bingwen Yan, Ph.D. and Steven Rupp
ZirChrom Separations, Inc.

Technical Bulletin # 296

The chromatography of basic drugs on C18-silica phases is often complicated due to mixed-mode interactions that cause poor peak shape and irreproducible results. ZirChrom®-MS is a new zirconia-based reversed-phase column that has enhanced mixed mode retention characteristics which allow for LC/MS chromatography of highly basic amines with excellent peak shape and efficiency.

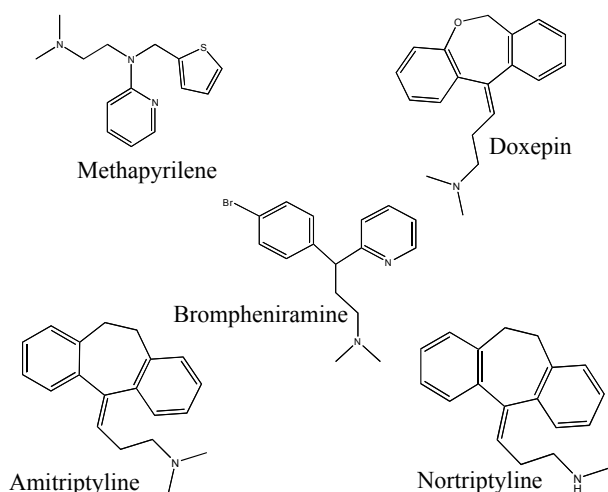


Figure 1: Structures for the Compounds of Interest.

Introduction

The chromatography of basic drugs on C18-silica phases is difficult due to interactions between silanols and the amines¹. We have found that a tricyclic antidepressant, Amitriptyline, may be used as a probe solute for quantifying silanophilicity of HPLC columns. The surface chemistry of zirconia-based phases is dominated by Lewis acid sites, rather than the Bronsted acid sites, which dominate the surface chemistry of silica phases. The mixed-mode retention character of ZirChrom®-MS (cation-exchange and reversed-phase) allows separations that were previously difficult using conventional silica C18 phases. This application note shows an impressive LC/MS compatible separation of antidepressants in a highly organic, near neutral pH mobile phase.

Experimental

A mixture of five basic drugs (four antidepressants) was separated at 35 °C using a ZirChrom®-MS column. The separation conditions were as follows:

Column: ZirChrom®-MS, 50 mm x 4.6 mm i.d.
(Part Number: MS01-0546)
Mobile Phase: Isocratic elution: 65/35 A/B
A: acetonitrile
B: 10mM ammonium acetate, pH 5.0
Temperature: 35 °C

Flow Rate: 1.0 ml/min.
Injection Vol.: 1 µl
Pressure Drop: 59 bar
Detection: UV at 254 nm

Five basic pharmaceutical compounds were separated using simple acetonitrile/water isocratic elution and a LC/MS friendly acetate buffer. The selectivity and peak symmetry of all five compounds is very good which allows for a separation using only a short 5 cm long column.

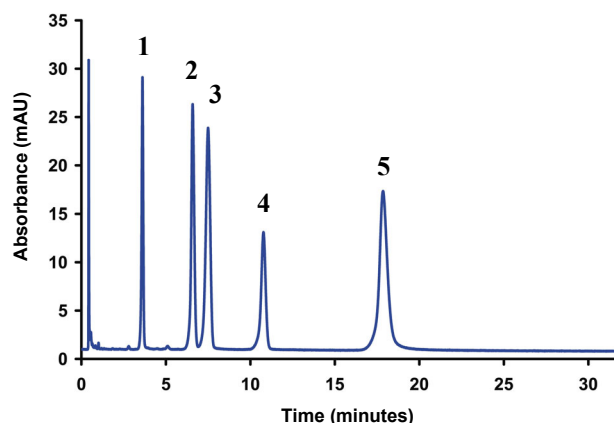


Figure 2: Separation of 1=Methapyrilene, 2=Doxepin, 3=Brompheniramine, 4=Amitriptyline, and 5=Nortriptyline.

This method can be tailored to your specific application needs. ZirChrom method developers can help to optimize and transfer this method to your site. Please contact ZirChrom technical support at 1-866-STABLE-1 or support@zirchrom.com for details.

ZirChrom phases offer unique selectivity, high efficiency, and excellent chemical and thermal stability.

References

1) G.B. Cox, *J. Chromatography A*. **656**, 353, 1993.

ZirChrom Separations, Inc.
617 Pierce Street, Anoka, MN 55303
1-866-STABLE-1
support@zirchrom.com

Visit www.zirchrom.com for more application notes using ultra-stable, high efficiency ZirChrom columns.