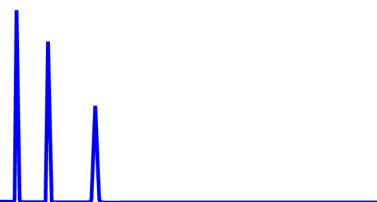




ZirChrom[®]

Technical
Bulletin #306

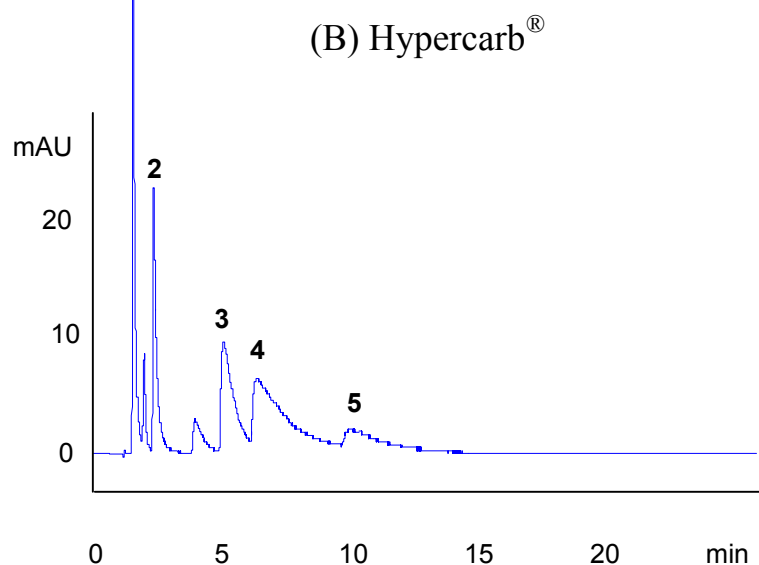
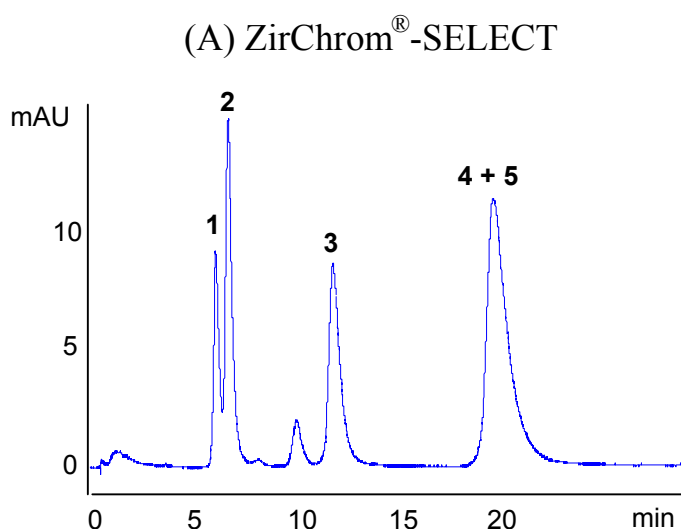


... For Peak Performance

ZirChrom[®]-SELECT versus Hypercarb[®] for Basic Drugs

ANALYTES

- 1 - Methapyrilene
- 2 - Brompheniramine
- 3 - Doxepin
- 4 - Amitriptyline
- 5 - Nortriptyline



LC Conditions

Columns:

(A) ZirChrom[®]-SELECT, 50 x 4.6 mm i.d. (5 micron)

(B) Hypercarb[®], 50 x 4.6 mm i.d. (5 micron)

Mobile Phase:

65/35 ACN/(20 mM acetic acid, 5 mM octylamine,
pH 5.0 adjusted w/ ammonium hydroxide)

Flow Rate: 1.0 mL/min.

Temperature: 35 °C

Injection Volume: 1.0 µl

Detection: 254 nm

