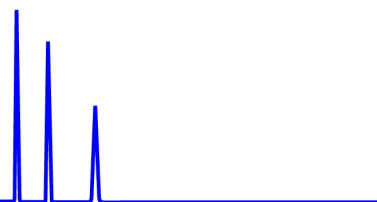




ZirChrom[®]

Technical
Bulletin #218

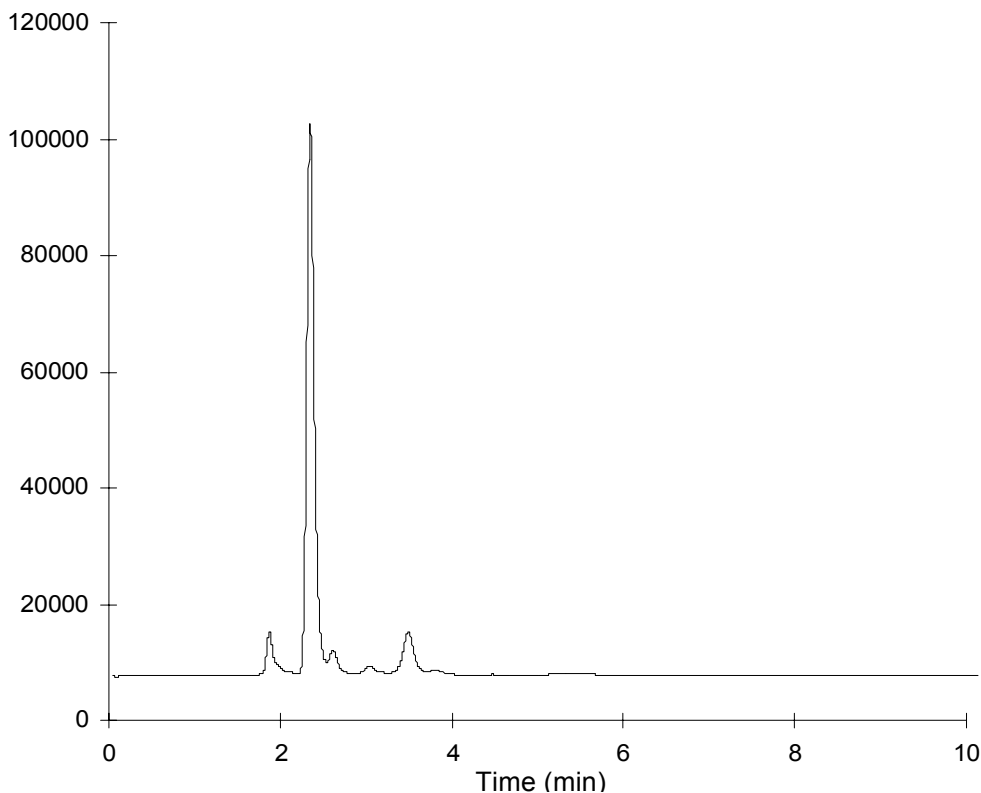


... For Peak Performance

Natural Flavoring Agents on ZirChrom[®]-WAX

Analytes

Saponins in
the yucca
shidigera
flavoring
extract



LC Conditions

Column: ZirChrom[®]-WAX, 150 x 4.6 mm

Mobile Phase: 85/15 A/B

A: Acetonitrile

B: Water

Flow rate: 2.0 mL/min.

Temperature: ambient

Detection: ELSD

